

SOUTH ROAD, A P.U.D.

A REPLAT OF A PORTION OF LOTS 1, 2, 3, 4, 6, 7 & 8, BLOCK 35, "PALM BEACH FARMS CO. PLAT NO. 3" (PB. 2, PGS. 45-54 P.B.C.R.) IN SECTION 36, TOWNSHIP 44 SOUTH, RANGE 41 EAST, PALM BEACH COUNTY, FLORIDA



79

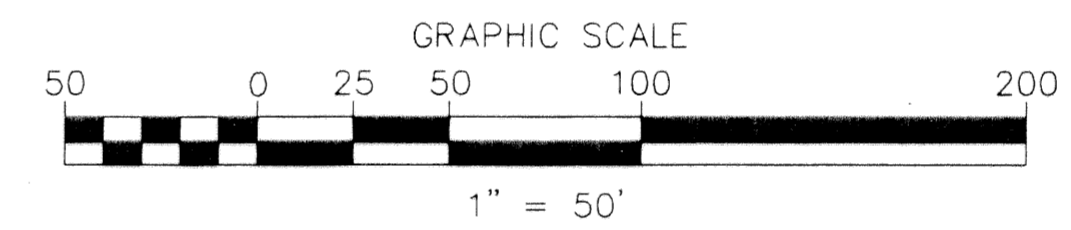
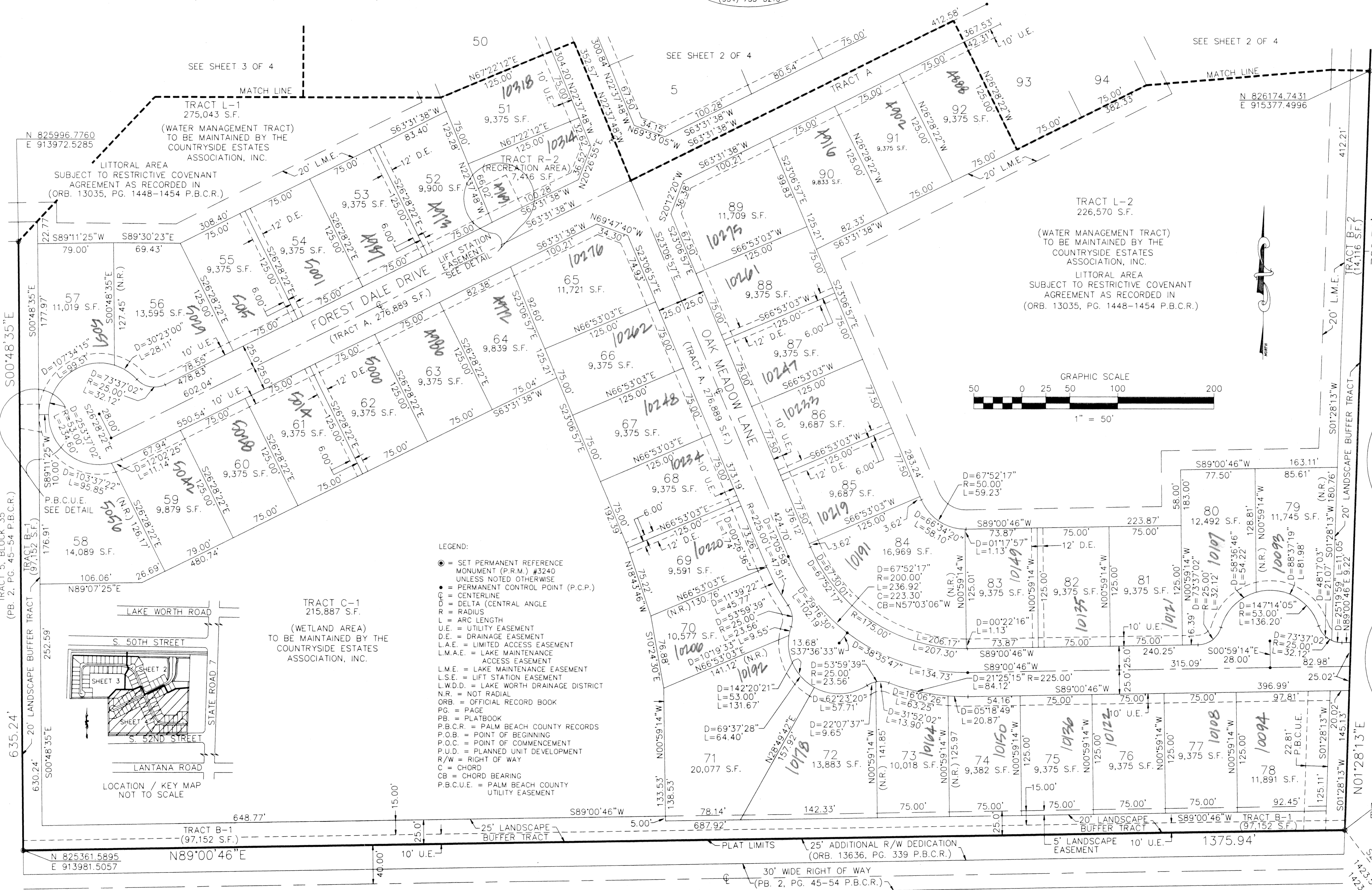
STATE OF FLORIDA
COUNTY OF PALM BEACH

THIS PLAT WAS FILED FOR RECORD AT _____ DAY OF _____ 200____ AND DULY RECORDED IN PLAT BOOK _____ ON PAGES _____ THROUGH _____
DOROTHY H. WILKEN, CLERK
BY: _____ DC

SHEET 4 OF 4

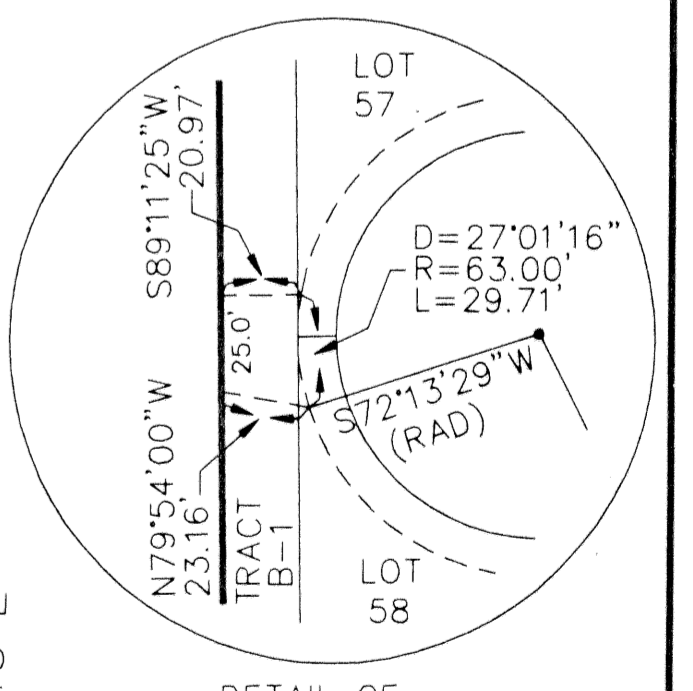
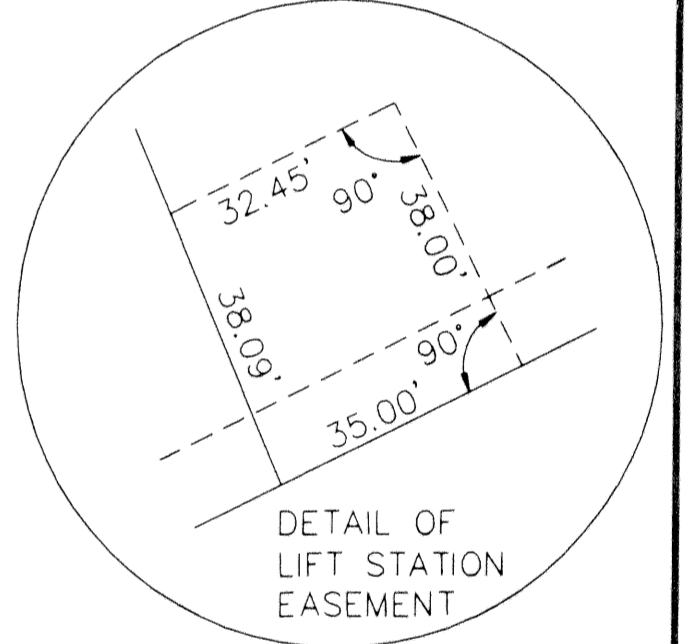
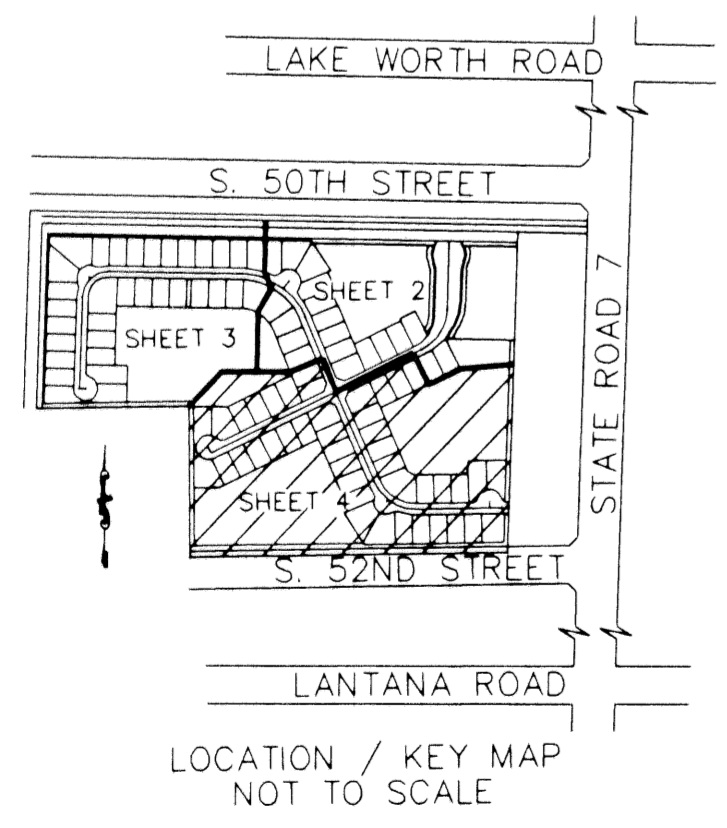
TRACT 1, BLOCK 35
(PB. 2, PG. 45-54 P.B.C.R.)

TRACT 8, BLOCK 35
(PB. 2, PG. 45-54 P.B.C.R.)
9.32 +/- AC.



- LEGEND:
- = SET PERMANENT REFERENCE MONUMENT (P.R.M.) #3240 UNLESS NOTED OTHERWISE
 - = PERMANENT CONTROL POINT (P.C.P.)
 - = CENTERLINE
 - Δ = DELTA (CENTRAL ANGLE)
 - R = RADIUS
 - L = ARC LENGTH
 - U.E. = UTILITY EASEMENT
 - D.E. = DRAINAGE EASEMENT
 - L.A.E. = LIMITED ACCESS EASEMENT
 - L.M.A.E. = LAKE MAINTENANCE ACCESS EASEMENT
 - L.M.E. = LAKE MAINTENANCE EASEMENT
 - L.S.E. = LIFT STATION EASEMENT
 - L.W.D. = LAKE WORTH DRAINAGE DISTRICT
 - N.R. = NOT RADIAL
 - ORB. = OFFICIAL RECORD BOOK
 - PG. = PAGE
 - PB. = PLATBOOK
 - P.B.C.R. = PALM BEACH COUNTY RECORDS
 - P.O.B. = POINT OF BEGINNING
 - P.O.C. = POINT OF COMMENCEMENT
 - P.U.D. = PLANNED UNIT DEVELOPMENT
 - R/W = RIGHT OF WAY
 - C = CHORD
 - CB = CHORD BEARING
 - P.B.C.U.E. = PALM BEACH COUNTY UTILITY EASEMENT

SUBDIVISION SOUTH ROAD
 PAGE 79
 BLOCK 35
 FLOOD MAP # 100B
 ZONING PD
 QUAD # 63
 SE
 TAZ 1021
 PUD NAME SOUTH ROAD A PUD



PALM BEACH COUNTY
G.P.S. STATION
"WOODWIND"
N 824056.064
E 915867.114
FND. PALM BEACH COUNTY DISK

52ND. PLACE SOUTH